

# Charging cables

## Three-Phase



The Project EV cable range is manufactured to the highest standards, incorporating years of experience combined with the latest technologies and materials.

Our range offers durability married to an ergonomic design allowing years of trouble free use.

### Mechanical Properties

- Mechanical life: no-load plug in / pull out > 10000times
- Impact of external force :can afford 1m drop and 2t vehicle run over pressure

### Electrical Performance

- The rated current:16A or 32A
- The rated voltage:250V
- Insulation resistance:>1000M $\Omega$  (DC500V)
- Terminal temperature rise:<50K
- Withstand voltage:2000V
- Contact Resistance:0.5m $\Omega$ Max
- Coupled insertion force: >45N<80N
- Operating temperature:-30 $^{\circ}$ C~+50 $^{\circ}$ C

### Shell Colour

White/black

### Cable Colour

Black/other colours need to be customized

### Applied Materials

- Shell Material:thermoplastics,flame retardant grade UL94-V0
- Contact bush: Copper alloy, silver plating
- Pin:Copper alloy, silver + thermoplastic on the top

### Features

1. Conform to the provisions and requirements of 62196-2 J1772 IEC 2010 SHEET 2-IIe.
2. Product assembly conforms to IEC 61851-1-2010 charging mode 3 connection mode B2.
3. Reliable materials,flame retardant,pressure resistance, abrasion resistance,impact resistance,impact resistance and oil resistance.
4. Excellent protection performance,IP55 protection level of the plug (working state) high security.



Type 1 – J1772 – 5 pin

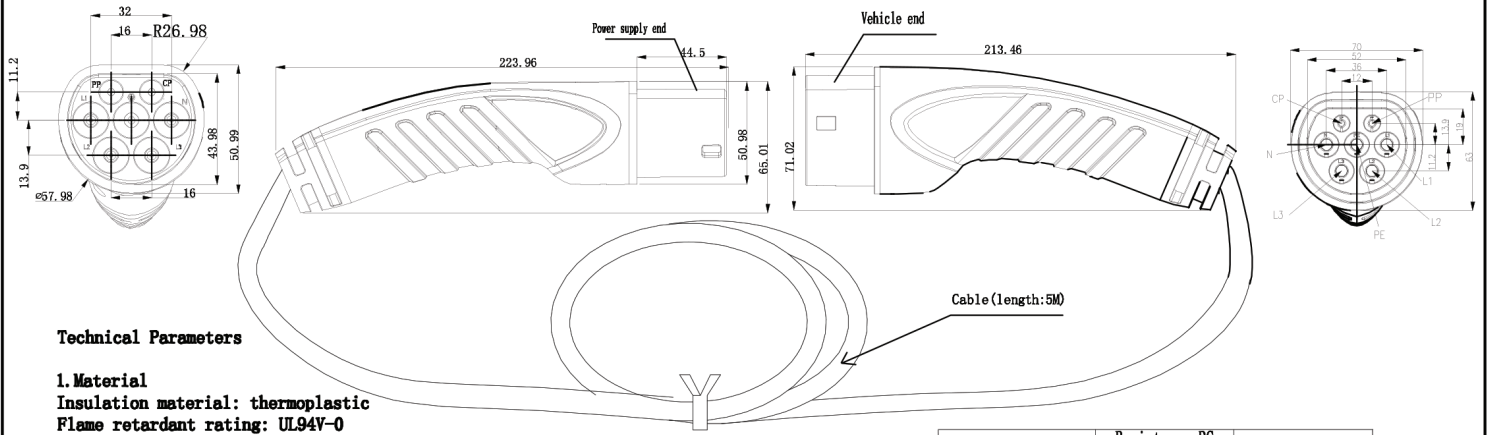


Type 2 – Mennekes – 7 pin

Product Type	Rated Current/voltage	Cable Specifications
FE-A16D3-E&C	16A/415V	5G2.5mm <sup>2</sup> +2*0.5mm <sup>2</sup>
FE-A32D3-E&C	32A/415V	5G6mm <sup>2</sup> +2*0.5mm <sup>2</sup>

Product Code	Description	Voltage	Cable Length	Charger Plug	Car Plug
EV-11KW	Three Phase (16amp) 5M Cable Type 2>Type 2	415v	5m	Type 2	Type 2
EV-22-32a-2-2--5m	Three Phase (32amp) 5M Cable Type 2>Type 2	415v	5m	Type 2	Type 2
EV-22-32a-2-2--7.5m	Three Phase (32amp) 7.5M Cable Type 2>Type 2	415v	7.5m	Type 2	Type 2
EV-22-32a-2-2--10m	Three Phase (32amp) 10M Cable Type 2>Type 2	415v	10m	Type 2	Type 2





**Technical Parameters**

**1. Material**  
 Insulation material: thermoplastic  
 Flame retardant rating: UL94V-0  
 Contact material: copper alloy, silver plated

**2. Specification**  
 Rated current: 16A  
 Rated voltage: 415V  
 Contact resistance: 0.5mΩ Max  
 Insulation resistance: 1000MΩ Min (DC500V)  
 Withstand voltage: 2000V  
 Terminal temperature rise: <50K  
 Working temperature: -30 ° C ~ 50 ° C  
 Plug and play life: >10000 times  
 Protection level: IP55

**Notes:**  
 1. The vehicle end plug is designed according to the standard IEC62196-Sheet2-IIe  
 2. The power supply plug is designed according to the standard IEC62196-Sheet2-IIe

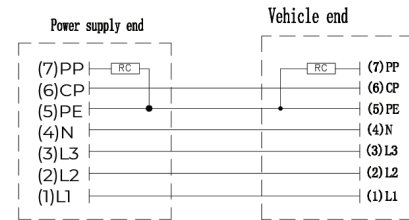
Static resistance is 680 ohms (±3%)  
**2. Charging cable:**

Three phase 16A:5G2.5mm<sup>2</sup> +2\*0.5mm<sup>2</sup>

Rated Current	Resistance RC (tolerance ± 3%)	power
16A	680Ω	0.5W a, b

Cable reference

No.	Function mark	Three phase
7	PP	16A
6	CP	0.5mm <sup>2</sup>
5	PE	2.5mm <sup>2</sup>
4	N	2.5mm <sup>2</sup>
3	L3	2.5mm <sup>2</sup>
2	L2	2.5mm <sup>2</sup>
1	L1	2.5mm <sup>2</sup>



# Charging cables

## Single-phase



The Project EV cable range is manufactured to the highest standards, incorporating years of experience combined with the latest technologies and materials.

Our range offers durability married to an ergonomic design allowing years of trouble free use.

### Mechanical Properties

- Mechanical life: no-load plug in / pull out > 10000times
- Impact of external force :can afford 1m drop and 2t vehicle run over pressure

### Electrical Performance

- The rated current:16A or 32A
- The rated voltage:250V
- Insulation resistance:>1000MΩ (DC500V)
- Terminal temperature rise:<50K
- Withstand voltage:2000V
- Contact Resistance:0.5mΩMax
- Coupled insertion force:>45N<80N
- Operating temperature:-30°C~+50°C

### Shell Colour

White/black

### Cable Colour

Black/other colours need to be customized

### Applied Materials

- Shell Material:thermoplastics,flame retardant grade UL94-V0
- Contact bush:Copper alloy, silver plating
- Pin:Copper alloy, silver + thermoplastic on the top

### Features

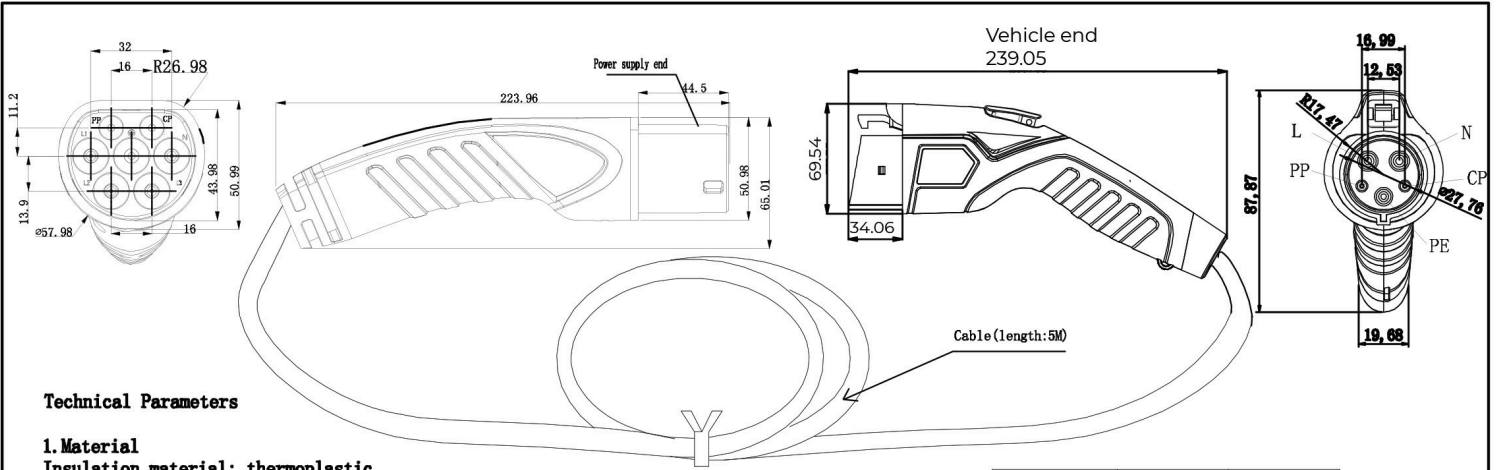
1. Conform to the provisions and requirements of 62196-2 J1772 IEC 2010 SHEET 2-IIe.
2. Product assembly conforms to IEC 61851-1-2010 charging mode 3 connection mode B2.
3. Reliable materials,flame retardant,pressure resistance, abrasion resistance,impact resistance,impact resistance and oil resistance.
4. Excellent protection performance,IP55 protection level of the plug (working state) high security.

Product Type	Rated Current/voltage	Cable Specifications
FE-A16D-E&C	16A/250V	3G2.5mm <sup>2</sup> +2*0.5mm <sup>2</sup>
FE-A32D-E&C	32A/250V	3G6mm <sup>2</sup> +2*0.5mm <sup>2</sup>



Product Code	Description	Voltage	Cable Length	Charger Plug	Car Plug
EV-7KW	Single Phase (32amp) 5M Cable Type 2>Type 2	240v	5m	Type 2	Type 2
EV-32a-2-2--7.5m	Single Phase (32amp) 7.5M Cable Type 2>Type 2	240v	7.5m	Type 2	Type 2
EV-32a-2-2--10m	Single Phase (32amp) 10M Cable Type 2>Type 2	240v	10m	Type 2	Type 2
EV-32a2-1-5m	Single Phase (32amp) Type 2 to Type 1 Cable	240v	5m	Type 2	Type 1





**Technical Parameters**

**1. Material**

Insulation material: thermoplastic

Flame retardant rating: UL94V-0

Contact material: copper alloy, silver plated

**2. Specification**

Rated current: 16A

Rated voltage: 250V

Contact resistance: 0.5mΩ Max

Insulation resistance: 1000MΩ Min (DC500V)

Withstand voltage: 2000V

Terminal temperature rise: <50K

Working temperature: -30 ° C ~ 50 ° C

Plug and play life: >10000 times

Protection level: IP55

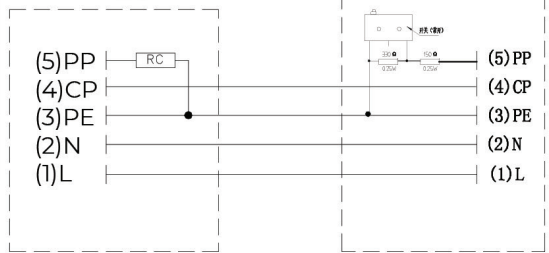
Cable reference

No.	Function mark	Single phase
		16A
5	PP	
4	CP	0.5mm <sup>2</sup>
3	PE	2.5mm <sup>2</sup>
2	N	2.5mm <sup>2</sup>
1	L	2.5mm <sup>2</sup>

Rated Current	Resistance RC (tolerance ± 3%)	power
16A	680Ω	0.5W a, b
16A	150Ω, 330Ω	0.25W a, b

Power supply end

Vehicle end



**Notes:**

1. The vehicle end plug is designed according to the standard IEC62196-Sheet2-IIe

2. The power supply plug is designed according to the standard SAE-J1772-2012

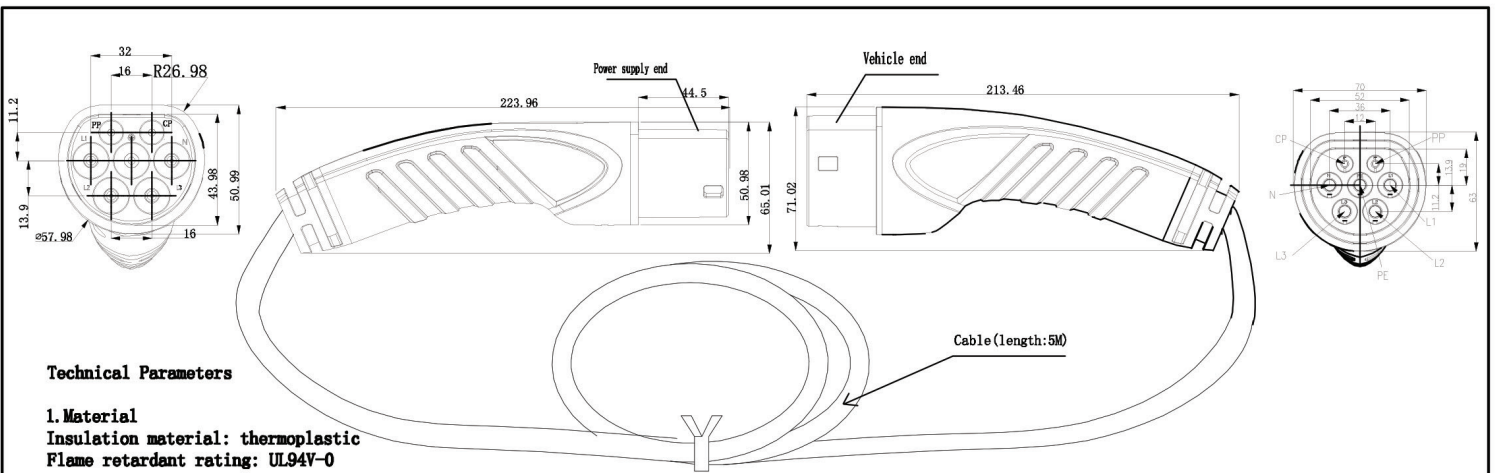
European javelin: Static resistance is 680ohms (±3%)

American javelin: Static resistance is 150ohms (±3%)

Parallel resistance is 330ohms (±3%)

**2. Charging cable:**

European javelin: 16A:3G2.5mm<sup>2</sup>+2\*0.5mm<sup>2</sup>



**Technical Parameters**

**1. Material**

Insulation material: thermoplastic

Flame retardant rating: UL94V-0

Contact material: copper alloy, silver plated

**2. Specification**

Rated current: 32A

Rated voltage: 250V

Contact resistance: 0.5mΩ Max

Insulation resistance: 1000MΩ Min (DC500V)

Withstand voltage: 2000V

Terminal temperature rise: <50K

Working temperature: -30 ° C ~ 50 ° C

Plug and play life: >10000 times

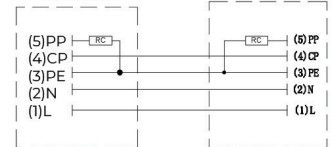
Protection level: IP55

Cable reference

No.	Function mark	Single phase
		32A
5	PP	
4	CP	0.5mm <sup>2</sup>
3	PE	6mm <sup>2</sup>
2	N	6mm <sup>2</sup>
1	L	6mm <sup>2</sup>

Power supply end

Vehicle end



**Notes:**

1. The vehicle end plug is designed according to the standard IEC62196-Sheet2-IIe

2. The power supply plug is designed according to the standard IEC62196-Sheet2-IIe

Static resistance is 220 ohms (±3%)

**2. Charging cable:**

Single phase 32A:3G6mm<sup>2</sup>+2\*0.5mm<sup>2</sup>